



The Star of Kansas

The Prairie Village

December 2007

Voice

Shop PV for the Holidays



As the holiday season approaches, remember to **Shop Prairie Village**. Savvy shoppers can complete their holiday shopping right here in Prairie Village. Between the **Prairie Village Shops, Corinth Square**, the **Hy-Vee Center** on State Line, **Meadowbrook Village** at 95th & Nall, and the City's other retail destinations, you're sure to find unique gifts for family and friends.

No time for last minute shopping or not sure what to get? No need to worry. **The Prairie Village Gift Card** is the perfect gift. Redeemable at merchants throughout the City, the Prairie Village Gift Card lets you share Prairie Village with friends, family, and colleagues without the worry of picking out the perfect gift. Gift cards are on sale at the Municipal Offices, 7700 Mission Road, the Prairie Village Merchants Association in the Prairie Village Shopping Center and online at www.pvkansas.com.

In addition to being convenient, making your purchases in Prairie Village helps local businesses and provides needed funding for City services. The money you spend helps keep Prairie Village's merchants in business, and a portion of the sales tax you pay helps finance street improvements, Crime Prevention, park maintenance and more.

So remember – Shop Prairie Village for the Holidays!!



Snow and Ice Removal

The variety of winter storms and weather extremes creates a special challenge to Public Works employees who strive to keep your streets usable in the winter months.

With winter approaching, Public Works is prepared for the ritual of removing snow and ice from city streets. All personnel have received refresher training on equipment and procedures. Procedures and practices for plowing and salting have been reviewed and updated. The barn is stocked with 2,000 tons of salt and ready for winter.

When a winter storm is forecast, Public Works staff develop an operation plan considering time of day, type of weather, temperature, wind, length of storm, etc. Crews are generally scheduled to work in 12 hour shifts to clear streets.

The work priorities are:

- Maintain bare pavement on arterial streets
- Maintain bare pavement on collector streets

- Maintain public building sidewalks
- Plow or salt one lane on residential streets
- Maintain sidewalks and parking lots in the parks

The City does not remove ice or snow from private property. Property owners are responsible for removing ice and snow from the sidewalks abutting their property within 24 hours from the time that the snow or ice storm ends. If the snow falls or ice accumulates upon the sidewalks in the night time, removal of it must be within 24 hours after sunrise.

Snow removed from private property should not be placed in the street or on the sidewalk. If you hire someone to clear your driveway and sidewalks, inform them of this City ordinance requirement. As the property owner, you are responsible for the conduct of the hired company.

If you have any questions about the City's snow removal program, contact the Public Works Department at 913-385-4647 or send and email to publicworks@pvkansas.com.

INSIDE:

Mayor's Message

Lifeguard and Operations Attendant Applications are being Accepted

Peanut Butter Week a Success

Order your brick for the Holidays

2008 Animal Licensing

Holiday Tree Recycling Program

City Employees Prepare for Emergencies

ON THE BACK:

Crime Prevention: This Winter Put Safety at the Top of Your Outdoor Activity List

P.V. Notes:

Ball Field Reservations Due

A Newsletter published for the residents of the City of Prairie Village

Municipal Office | 7700 Mission Road | Prairie Village, Kansas 66208 | 913-381-6464 | www.pvkansas.com



Mayor's Message

In an effort to improve communication with Prairie Village residents, we have launched a new email subscription service - **Prairie Village E-News Updates**. Through this service you can sign up to receive Council Meeting Packets, the monthly Prairie Village Voice Newsletter or other Prairie Village News and Announcements. This important and timely information about Prairie Village will be delivered directly to your e-mail inbox.

Stay informed about City news, fill out the sign up form below and be reminded through email. You can also visit www.pvkansas.com and click on the E-News sign-up link to register for this service online.

E-NEWS SUBSCRIPTION FORM

Name _____ Email Address _____

Mailing Lists PV News & Announcements
 PV Voice Newsletter
 City Council Packets

Preferred Format HTML Text

Address _____

Phone # _____ Ward # _____

Return form to:
City of Prairie Village, Attn: E-News, 7700 Mission Road, Prairie Village, KS 66208

Lifeguard and Operations Attendant Applications are Being Accepted

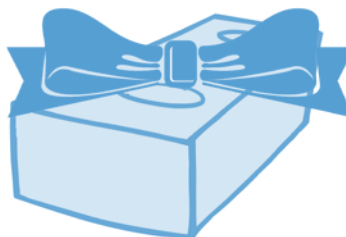
The City of Prairie Village is accepting applications for lifeguards and operations attendants for the 2008 pool season. Lifeguard pay starts at \$8.46/hour. Operations attendants begin at \$6.55/hour.

The American Red Cross will once again be offering lifeguard certification courses starting in late winter and early spring. **All Prairie Village lifeguards must be Red Cross certified before they can start.**

Interviews will begin in February, so apply now. Applications are available on-line at www.pvkansas.com Please contact Chris Engel at 913-381-6464 or cengel@pvkansas.com for further information.

Peanut Butter Week a Success

In October, Prairie Village celebrated its 23rd annual Peanut Butter Week campaign and presented The Harvesters Community Food Network with over 5,600 pounds of peanut butter and \$1,520 in monetary donations. Sponsors of this year's drive included churches, schools, daycare providers, businesses, and Prairie Village's two retirement communities: Brighton Gardens and Claridge Court. This outpouring of kindness, support and goodwill for such a worthwhile cause is greatly appreciated.



Order your Brick for the Holidays

Personalized bricks make great holiday gifts for those who have everything! The **Prairie Village Arts Council** continues to sell personalized bricks which will be installed in the patio of the Community Center during June 2008. Prices for individual bricks are \$35 and corporate sponsorships begin at \$100. Funds raised through the "Pave the Patio" project will cover the costs of engraving and installing the bricks, and will help support cultural arts programs for the community.

For additional information or to receive an order form, call Jeanne Koontz at 913-381-6464, email to jkoontz@pvkansas.com or download the form at www.pvkansas.com/aboutpv/Pave_the_Patio.shtml.

2008 Animal Licensing

City Ordinance requires the annual licensing of all cats and dogs residing in the City. The ordinance also requires proof of a current rabies vaccination. Now is the time to license your dog or cat for the 2008 licensing year.

NOTE: The vaccination does not have to be valid throughout the year but must be valid at the time of licensing. Therefore, all pets can be licensed in January and February before late fees are assessed. The license fee for a spayed or neutered pet is \$6. The fee for an animal that has not been spayed or neutered is \$12.

Additional information is available at www.pvkansas.com or you can contact the City Clerk's Office at 913-381-6464 or send an email to cityclerk@pvkansas.com.

Holiday Tree Recycling Program

The City will once again sponsor a Holiday Tree Recycling Program for Prairie Village residents. **Trees may be placed in the designated areas of Porter, Franklin, and Meadowlake Parks, and in the Harmon Park parking lot near the water tower.** The trees must be free of all lights, ornaments, stands and any metal nails, etc. as these items will damage the chipping machine. Residents may take the chips for their own use.

The program will be available from Dec. 22, 2007 to Jan. 20, 2008.



City Employees Prepare for Emergencies

Prairie Village employees attended Emergency Management classes in September and October. These two and three-day courses were offered by both Johnson County and the Mid-America Regional Council (MARC) as well as online through the Federal Emergency Management Agency (FEMA) website. These classes helped provide insight as to what procedures should be taken when an emergency occurs. Every part of the city has a duty during a time of crisis. Learning about these duties helps better prepare the City to handle a multitude of potential hazards, both natural and man-made.

The majority of these classes focused on the framework within which all entities of local government, volunteer agencies and the private sector can operate in an integrated and coordinated fashion before, during and after an emergency/disaster event. The Department of Homeland Security developed this comprehensive framework for incident management to enable responders at all levels to work together more effectively to manage incidents no matter what the cause, size or complexity. The National Incident Management System (NIMS) incorporates best practices currently in use by incident managers at all levels. It was developed through extensive outreach to state, local and tribal officials, the emergency response community and the private sector.

Arts COUNCIL Prairie Village

PRESENTS

Mark your calendars now to view these exhibits and attend opening receptions honoring these talented artists.

DECEMBER

Christi Roberts Bony exhibited with the MidAmerica Pastel Society, but now has the R.G. Endres Gallery all to herself. Christi brings a delightful mix of subject matter with something for everyone, ranging from scenic landscapes to up-close views of flora and fauna. She even includes a few portraits of her favorite children.

JANUARY

Rusty Leffel, *Photography*
Opening Reception
January 11th, 6:30 pm

FEBRUARY

Mark Glover, *Oil*
Opening Reception
February 8th, 6:30 pm

Gallery hours are Mon - Fri
8:00am - 5:00pm.





Prairie Village

Notes

Ball Field Reservation Applications Due

Baseball season will be here before you know it, and ball fields in Prairie Village are always in demand. Make plans now to reserve a practice field for your team.

The City of Prairie Village allows reservations of ball fields for soccer, baseball, and softball practices. Prairie Village teams (those with a majority of players who are Prairie Village residents or attend school in Prairie Village) will be given priority for field reservations, but any team may apply to reserve a field. Teams can reserve two practice times per week for up to 1 1/2 hours. Fields are available in Porter, Franklin, Windsor, and Meadowlake Parks.

If your team reserved a field during 2007, your coach should receive a 2008 application form soon. You may also obtain one at the Municipal Offices or online at www.pvkansas.com/parks. There is a \$50 reservation fee per team that must be submitted with your application.

The deadline for submitting applications is January 18, 2008.

If you have any questions, contact the City Clerk's office at 913-381-6464 or email to cityclerk@pvkansas.com.

Everyone May Participate

If any individual requires an accommodation to participate in public meetings, contact the City Clerk's office at 913-381-6464 (TDD 1-800-766-2777) at least 48 hours prior to the scheduled meeting time, if possible, to make arrangements.



Crime Prevention
with Officer Dan Robles

This Winter Put Safety at the Top of Your Outdoor Activity List

We remind ourselves to change our clocks and turn back the hands one hour for the fall season. While turning back the time we must also remind ourselves that darkness will settle in much earlier. When you're out enjoying brisk evening walks or other outside activities after dark, remember to place personal safety at the top of your outdoor activity list.

- Schedule outdoor walking, running and other activities during daylight hours.
- Use the "buddy system" and take a friend along when walking or jogging.
- Don't use shortcuts when walking or going from one place to another.
- Avoid locations that make you feel uncomfortable; trust your senses.
- Walk talk and carry yourself in an assertive manner.
- Leave your headphones at home so you can hear your surroundings.
- Carry a cell phone and dial 911 when you observe suspicious activity.

Please use these personal safety tips all year long but especially now since darkness has started to fall early this upcoming holiday season. Feel free to contact Crime Prevention Officer Robles at 913-385-4613 or e-mail me at drobles@pvkansas.com with any questions you may have.

Prairie Village Municipal Office
7700 Mission Road
Prairie Village, KS 66208

Presorted Standard
U.S. Postage
PAID
Permit No. 549
Shawnee Mission, KS